

2016 Regional Conservation Partnership Program (RCPP) West Fork White River Watershed Project



The Regional Conservation Partnership Program (RCPP) is a new, comprehensive and flexible program that uses partnerships to stretch and multiply conservation investments and reach conservation goals on a regional or watershed scale.

Overview

The West Fork White River Watershed RCPP Project is a voluntary program that provides financial and technical assistance to agricultural producers for addressing water quality concerns in approximately one-third of the West Fork White River Watershed including Dye Creek, Rock Creek, West Mountain Branch and Ward Slough sub-watersheds in a portion of Washington County.

Resource Concerns Addressed by the Project

- Water Quality (primary)
- Inadequate Habitat for Fish and Wildlife Habitat (secondary)

Project Goals

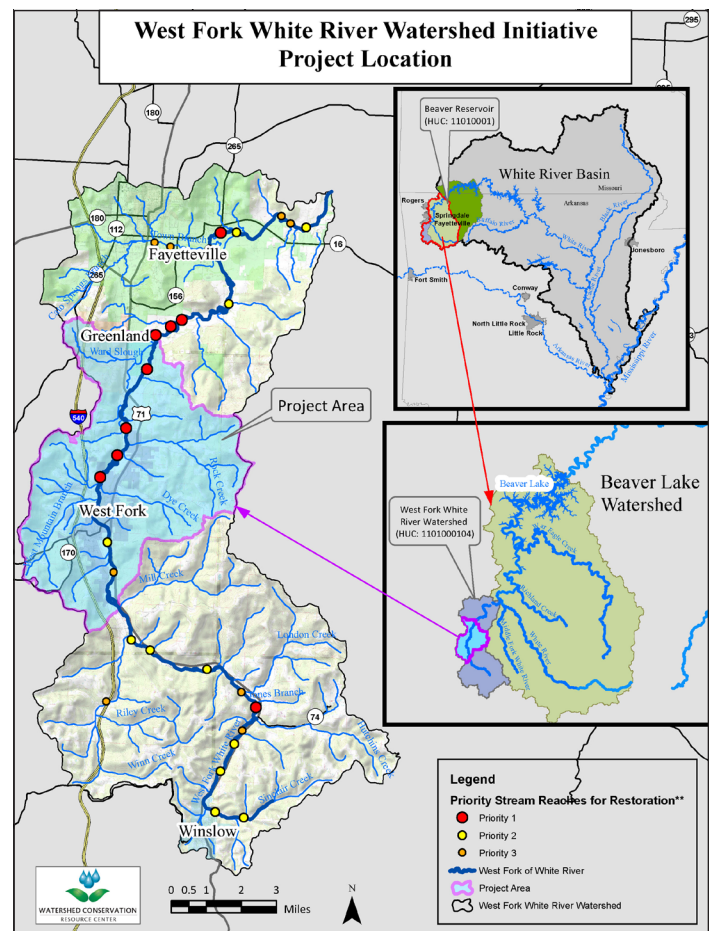
- Address critical watershed-scale erosion and improve water quality, riparian areas and aquatic habitat through the design and construction of large-scale river restoration
- Address accelerated streambank erosion and implement best management practices on pastures and forestland

Conservation Practice Funding

Funding will be available to eligible landowners through the Environmental Quality Incentives Program (EQIP). NRCS will provide financial assistance for a systems approach using approved conservation practices for the purpose of addressing resource concerns. Land and producer eligibility, adjusted gross income, and all other program criteria for participation must be met to participate in this initiative. Agricultural lands are eligible for enrollment in the initiative.



USDA is an equal opportunity provider, employer, and lender.



Approved Conservation Practices

- 106: Forestry Management Plan-Written
- 313: Waste Storage Facility
- 314: Brush Management
- 315: Herbaceous Weed Control
- 316: Animal Mortality Facility
- 327: Conservation Cover
- 332: Contour Buffer Strips
- 338: Prescribed Burning

continued on back

ARKANSAS

Natural
Resources
Conservation
Service

nrcs.usda.gov

- 342: Critical Area Planting
- 350: Water & Sediment Control Basin
- 362: Diversion
- 378: Pond
- 382: Fence
- 386: Field Border
- 390: Riparian Herbaceous Cover
- 391: Riparian Forest Buffer
- 393: Filter Strip
- 394: Firebreak
- 395: Stream Habitat Improvement
- 410: Grade Stabilization Structure
- 412: Grassed Waterway
- 422: Hedgerow Planting
- 472: Access Control
- 484: Mulching
- 490: Tree & Shrub Site Preparation
- 511: Forage Harvest Management
- 512: Forage and Biomass Planting
- 516: Livestock Pipeline
- 528: Prescribed Grazing
- 558: Roof Runoff Structure
- 561: Heavy Use Area
- 574: Spring Development
- 578: Stream Crossing
- 580: Streambank & Shoreline Protection
- 590: Nutrient Management
- 591: Amendments for the Treatment of Animal Waste
- 595: Integrated Pest Management
- 601: Vegetative Barrier
- 612: Tree & Shrub Establishment
- 614: Watering Facility
- 642: Water Well
- 645: Upland Wildlife Management
- 666: Forest Stand Improvement

PL-566 Funding

The RCPP project is also receiving funding through the PL-566 Program. PL-566 funding is provided to the partners to address critical streambank erosion sites. A comprehensive watershed plan will be developed to identify key sites for streambank stabilization projects. Funding provided by NRCS and the partners will fund the construction of these projects.

How to Apply for RCPP

NRCS and associated conservation partners will deliver this program collaboratively. Applications may be obtained and filed with NRCS at:

Washington County

Fayetteville Field Service Center
2898 Point Circle, #2
Fayetteville, AR 72704
(479) 442-4160, ext. 3

For More Information

If you need more information about RCPP, please contact one of the above offices or visit the NRCS Arkansas Web site at: www.ar.nrcs.usda.gov.

For more information on the West Fork White River Watershed Project contact the Beaver Watershed Alliance at (479) 750-8007.

Partners

Lead Partner

- Watershed Conservation Resource Center

Collaborating Partners

- Beaver Watershed Alliance (Lead Outreach)
- Beaver Water District
- Walton Family Foundation
- Washington County Conservation District
- Arkansas Forestry Commission
- Northwest Arkansas Land Trust
- City of Fayetteville
- City of West Fork
- Arkansas Game and Fish Commission
- Arkansas Farm Bureau
- Arkansas Natural Resources Commission
- Washington County Cooperative Extension Service
- Ozark Water Watch

