

War Eagle Creek Watershed Initiative Regional Conservation Partnership Program (RCPP)

Natural Resources Conservation Service

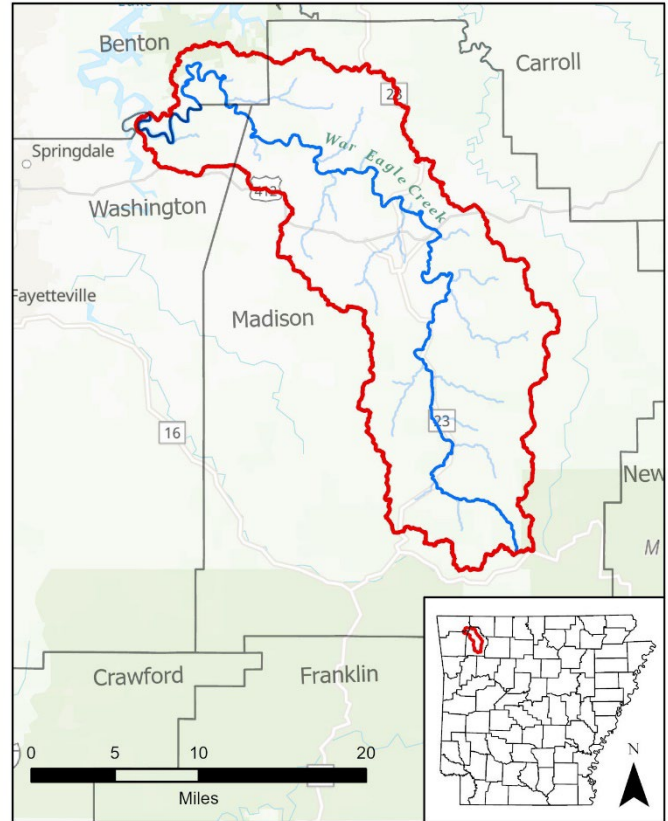
Project Overview

Project Life 2023-2027

- Counties involved: Benton, Madison, and Washington
- Primary resource concerns: Soil, water, plants and animals, with a focus on field sediment, nutrient, and pathogen loss
- The intended environmental outcomes of this project include: an opportunity to address resources of concern on deciduous forest and pasturelands through implementation of land management practices; reduction of sediment loading from unpaved roads; implementation of stream restorations on the War Eagle Creek using natural channel design principles, one-hundred conservation-based plans developed and three non-US government-held conservation easements established. This initiative will also benefit eight threatened & endangered species identified in the War Eagle Creek watershed.

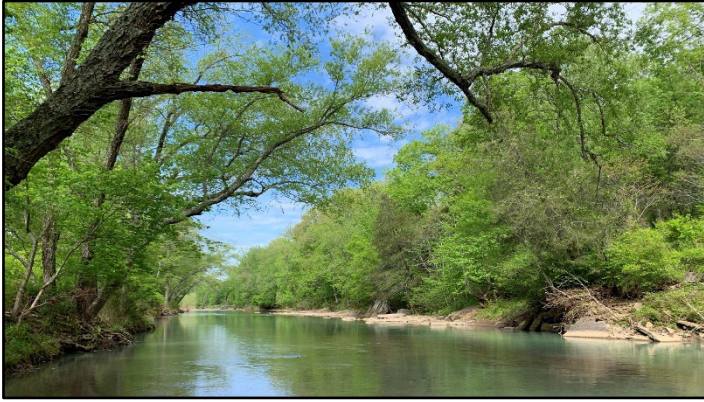
Goals

- The goal of the War Eagle Creek Watershed Initiative is reduction of sediment and nutrient loadings into Beaver Lake by working with partners, producers and landowners to implement innovative and traditional land management practices. These practices will support the protection of clean drinking water for more than 550,000 Arkansans, reduce land-loss, improve terrestrial and aquatic habitats, and improve local farming operations.



Objectives

- Provide technical and financial assistance to eligible producers and landowners, including historically underserved communities, to improve land management in forest and pasture systems.
- Help producers and landowners identify the conservation activities they need to solve their conservation concerns and install appropriate and/or innovative conservation practices.
- Improve water quality for a Source Water Protection watershed (Beaver Lake watershed).



Partners

- Beaver Watershed Alliance (Lead)
- Beaver Water District
- Watershed Conservation Resource Center
- Arkansas Dept of Agriculture - Natural Resources Division
- Arkansas Game and Fish Commission
- Arkansas Farm Bureau
- Madison, Washington and Benton County Farm Bureau
- Madison County Conservation District
- Washington County Conservation District
- Northwest Arkansas Land Trust
- Arkansas Archeological Survey
- H2Ozarks

Conservation Land Management Planning and Funding

- Technical assistance is available for agriculture producers who want to work with NRCS to develop a voluntary conservation plan. These are free plans that identify potential natural resource problems, evaluate alternatives, and recommend solutions that could make use of the land more effective and efficient.
- Funding will be available to eligible landowners through RCPP from 2023 to 2027. Agricultural and non-industrial forested lands are eligible for enrollment in the initiative. Landowners must have a farm service agency number to apply, assistance can be provided to obtain a farm service number.

Conservation Practices

Conservation Planning Activities:

- 110 - Grazing Management Plan - Written – TSP Activity
- 144 - Fish and Wildlife Habitat Design and Implementation Activity – TSP Activity
- 148 - Pollinator Habitat Plan – TSP Activity
- 160 - Prescribed Burning Plan – TSP Activity

Land Management Practices:

- 216 - Soil Health Testing
- 313 - Waste Storage Facility
- 315 - Herbaceous Weed Control
- 327 - Conservation Cover
- 340 - Cover Crops
- 342 - Critical Areas Planting
- 350 - Sediment Basin
- 378 - Pond (livestock or drinking water erosion control)
- 381 - Silvopasture Establishment
- 382 - Fence (inner fencing for rotational grazing)
- 386 - Field Border (strip of grass at edge of field)
- 391 - Riparian Forest Buffer
- 393 - Filter Strip
- 394 - Firebreaks
- 395 - Stream Habitat Improvement and Management
- 396 - Aquatic Organism Passage
- 410 - Grade Stabilization Structure (Rock Drop Structures to control water and/or stop gully erosion)
- 420 - Wildlife Planting
- 422 - Hedgerow Planting
- 472 - Access Control
- 484 - Mulching
- 490 - Tree/Shrub Site Preparation
- 512 - Forage & Biomass Planting (planning & establishing pasture grasses)
- 516 - Livestock Pipeline (delivering water to drinking trough or tanks)
- 560 - Access Roads
- 561 - Heavy Use Area (like cattle feeding areas)
- 574 - Spring Development
- 578 - Stream Crossing
- 580 - Streambank and Shoreline Protection
- 590 - Nutrient Management Plan
- 612 - Tree/Shrub Establishment
- 614 - Watering Facility (drinking tank or trough)
- 643 - Restoration of Rare or Declining Species

- 644 - Wetland Wildlife Habitat Management
- 645 - Upland Habitat Management
- 649 - Structures for Wildlife
- 657 - Wetland Restoration
- 658 - Wetland Creation
- 659 - Wetland Enhancement
- 666 - Forest Stand Improvements
- 810 - Annual Forages for Grasslands

Beaver Watershed Alliance (BWA)
 162 Doolin Dr. | P.O. Box 762
 Elkins, AR 72727
 (479)750-8007

Benton County
 Bentonville Field Service Center
 1401 NE McClain Rd
 Bentonville, AR 72712
 (479) 321-3742

Madison County
 Huntsville Field Service Center
 479 N. Parrot
 Huntsville, AR 72740
 (479) 738-6321 Ext. 3

Washington County
 Fayetteville Field Service Center
 2898 N. Point Cir #2
 Fayetteville, AR 72704
 (479) 718-6377

How to Apply

NRCS, Beaver Watershed Alliance and associated conservation partners will deliver this program collaboratively.

Schedule a free site visit with Beaver Watershed Alliance or Natural Resources Conservation Services.

Applications may be obtained and filed at the following NRCS county offices. Lead partner may also be contacted for information related to project.



Thank you to the following partners working together for the War Eagle Creek Initiative RCPP:



NATURAL RESOURCES DIVISION



Natural Resources Conservation Service



USDA is an equal opportunity provider, employer, and lender.

nrcs.usda.gov/